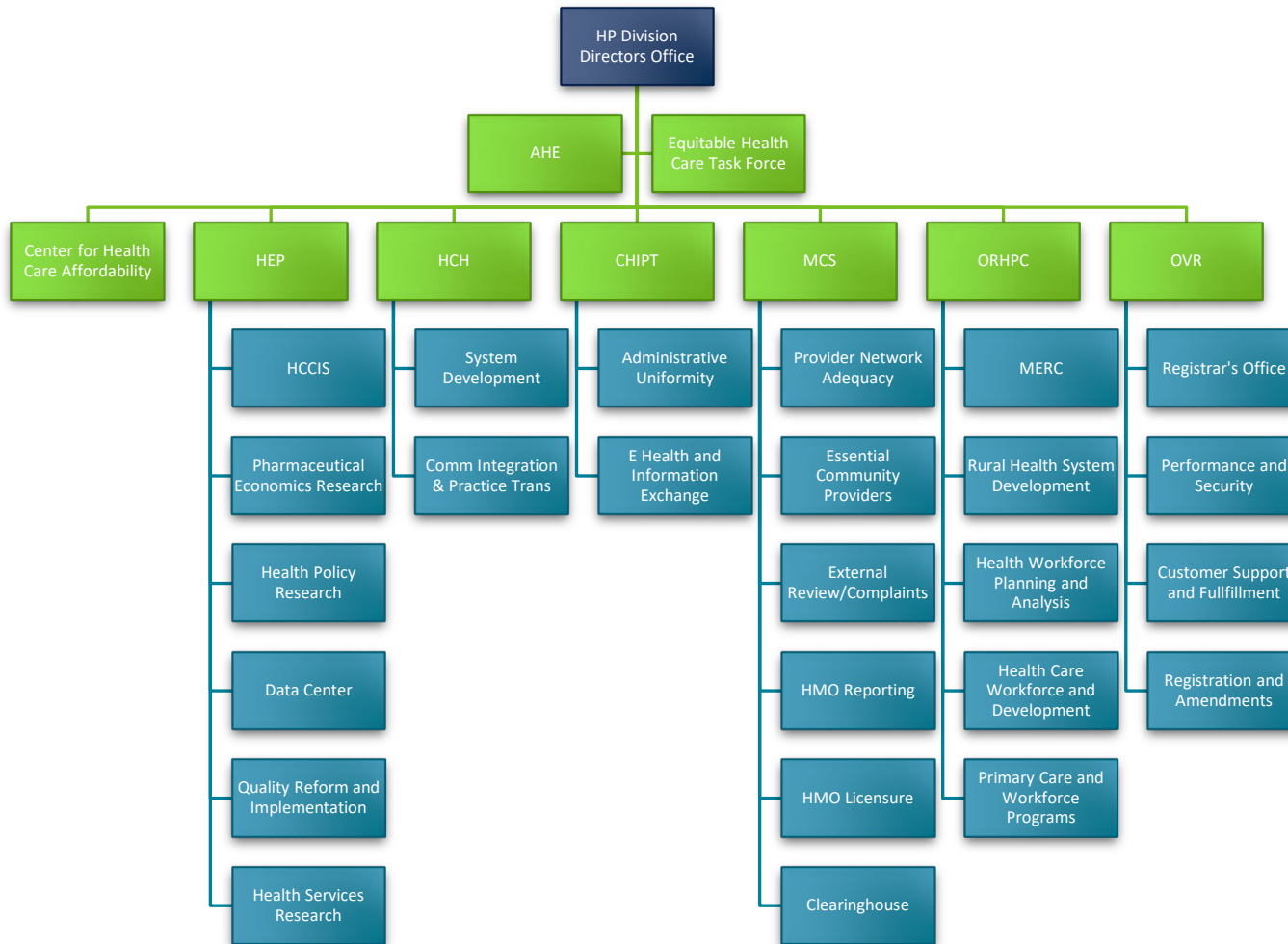


# Health Policy Division Staff and Organization List

MAY 7, 2024



# Table of Contents

Health Policy Division Staff and Organization List .....	1
Division Director’s Office .....	2
Adverse Events Reporting (AHE).....	2
Equitable Health Care Task Force .....	2
Center for Health Information Policy and Transformation (CHIPT) .....	2
Administrative Uniformity .....	2
E Health and Health Information Exchange.....	2
Center for Health Care Affordability.....	2
Health Care Homes (HCH).....	3
System Development .....	3
Community Integration and Practice Transformation.....	3
Health Economics Program (HEP).....	3
Minnesota Health Care Cost Information System (HCCIS) .....	3
Pharmaceutical Economics Research .....	3
Health Policy Research.....	4
Data Center .....	4
Quality Reform Implementation.....	4
Health Services Research .....	4
Managed Care Systems (MCS) .....	4
Clearinghouse .....	5
Office of Rural Health and Primary Care (ORHPC).....	5
MERC (Health Care Workforce and Education) .....	5
Rural Health System Development/Trauma.....	5
Health Workforce Planning and Analysis.....	5
Health Care Workforce and Development .....	6
Primary Care and Workforce Programs.....	6
Office of Vital Records (OVR) .....	7
Registrar’s Office.....	7
Performance and Security .....	7
Customer Support and Fulfillment .....	7
Registration and Fulfillment .....	7

Health Policy MN.IT Services ..... 8

## Division Director’s Office

- **Division Director:** Diane Rydrych
- **Assistant Division Director:** Susan Castellano
  - **Health Policy Specialist:** Tara Borton
  - **Financial Management:** Barb Fischer
  - **Information and Communications Coordinator:** Morgan (Foster) Powers

## Adverse Events Reporting (AHE)

- **Program Director:** Rachel Jokela

## Equitable Health Care Task Force

- **Reports to:** Division Director’s Office
  - Denise McCabe
  - Julia Stumpf

## Center for Health Information Policy and Transformation (CHIPT)

- **Program Manager:** Jennifer Fritz
  - Susie Blake
  - Sarah Shaw

## Administrative Uniformity

- **Supervisor:** Jennifer Fritz
  - Dave Haugen

## E Health and Health Information Exchange

- **Supervisor:** Karen Soderberg
  - Bilqis Amatus-Salaam
  - Kari Guida
  - Anne Schloegel

## Center for Health Care Affordability

- **Supervisor:** Vacant
  - Vacant

## Health Care Homes (HCH)

- **Program Manager:** David Kurtzon

## System Development

- **Supervisor:** Vacant (David Kurtzon)
  - Georgia Anderson
  - Joan Kindt
  - Jennifer Strickland
  - Tina Peters
  - Lisa Behr

## Community Integration and Practice Transformation

- **Supervisor:** Rosemarie Rodriguez-Hager
  - Sadie Anderson
  - Carol Bauer
  - Dorothy Hull

## Health Economics Program (HEP)

- **Program Director:** Stefan Gildemeister
- **Program Deputy Director:** Cara Bailey
  - Kristen Ackert
  - Diane Hammond
  - Kelsey Schaenzer

## Minnesota Health Care Cost Information System (HCCIS)

- **Supervisor:** Cara Bailey
  - Tracy Johnson

## Pharmaceutical Economics Research

- **Supervisor:** Annelisa Steeber
  - Margaret Darling
  - Sean MacDonnel

- David Raatz
- Melissa Walker, *Contractor*

## Health Policy Research

- **Supervisor:** Vacant (Stefan Gildemeister and Cara Bailey)
  - Lucas Foley
  - Nathan Hierlmaier
  - Marco Morales
  - Kathleen Panas
  - Renee Saarela
  - Michelle Wilson
  - Rachel Wittkopp, *Student Worker*

## Data Center

- **Supervisor:** Karl Fenstrom
  - Michael Adams
  - Jenn Baarson
  - Erinn Sanstead

## Quality Reform Implementation

- **Supervisor:** Denise McCabe
  - Rachel Cahoon
  - Sarah Evans
  - David Hesse
  - Kelsey Kannenberg

## Health Services Research

- **Director:** Pam Mink
  - Michael Burian
  - Beth Egan
  - Astrid Knott
  - Ben Nicla

## Managed Care Systems (MCS)

- **Program Manager:** Julie Erickson

- **Assistant Program Manager:** Alisha Simon
  - Andrea Ecklund (6/3/2024)
  - Dena Harrell
  - Tamika Howard, *Contractor*
  - Mekibib Hirpo
  - Kirsten Peterson
  - Michelle Stein
  - Brenda Sorvig
  - Mary Timm

### Clearinghouse

- Cheryl Jacobson

## Office of Rural Health and Primary Care (ORHPC)

- **Program Manager:** Zora Radosevich
  - Yende Anderson
  - Maria Rogness, Health Program Rep Senior

### MERC (Health Care Workforce and Education)

- **Supervisor:** Zora Radosevich
  - Diane Reger

### Rural Health System Development/Trauma

- **Deputy Director:** Tim Held
  - Cirrie Byrnes
  - Emma Distel
  - Maria Flor
  - LynMarie Harris
  - Tammy Peterson
  - Gina Vue
  - Grace Liu, student worker
  - Olivia Houck
  - Dee Telkamp

### Health Workforce Planning and Analysis

- **Supervisor:** Nitika Moibi
  - Kelsey Besse
  - Teri Fritsma
  - Lillian Norman, *student worker*
  - Kevan O’Hanlon, student worker
  - Valerie Stofferahn
  - Megan Loew
  - Madison Weirick

## Health Care Workforce and Development

- **Supervisor:** Ann Linde
  - Siham Abdellah
  - Roble Aden
  - Robin Bly
  - Zoe Hill
  - Melanie Innes
  - Erik Larson
  - Joanne Madrid
  - Samantha Rowbottom
  - Renee Richie
  - Addie Engebretson

## Primary Care and Workforce Programs

- **Supervisor:** Laura Sutter
  - Rebekah Ehlebracht
  - Elizabeth Fenske
  - Brenda Flattum
  - Katie Hentges
  - Janet Howard
  - Daniel Merkl
  - Therese Nett
  - Liza Root, *contractor*
  - Sarah Grafstrom

- Mai La Ong Vang
- Gao Nue Xiong

## Office of Vital Records (OVR)

- **Program Manager:** Molly Crawford

### Registrar's Office

- **Supervisor:** Molly Crawford
  - Mary L Connor
  - Heidi Granlund
  - Dylan Slivik
  - Sarah Ryan
  - Shonda Wright

### Performance and Security

- **Supervisor:** Anne Kleppe
  - Sally Almond
  - Nancy Bollman
  - Cheri Denardo
  - Justin Maine
  - Carl Haydel

### Customer Support and Fulfillment

- **Supervisor:** Bill Devine
  - Jose Andrade
  - Melanie Charpentier
  - Shelly Eichenlaub
  - Jesse Govaert
  - Michael Fanslow
  - Sharon Mitchell
  - John Mogren
  - Mary Roguski
  - Gretchen Younger

### Registration and Fulfillment



- **Supervisor:** Krista Bauer
  - Lead: Maria Schaff
  - James Andre
  - Jean Cocchiarella
  - Kimberly Dodge
  - Aura Mendoza Alburgueque
  - Jean Garman
  - Maureen Sheehy-Kustaa

## Health Policy MN.IT Services

- **Supervisor:** Rohit Saxena
  - Trung Nguyen
  - Jason Tillman
  - Doug Wheeler
  - Tony Yang
  - Hung Nguyen
  - Yang Yang

Minnesota Department of Health  
Health Policy Division  
PO Box 64975  
St. Paul, MN 55164-0975  
[www.health.state.mn.us](http://www.health.state.mn.us)

To obtain this information in a different format, call: 651-201-3560