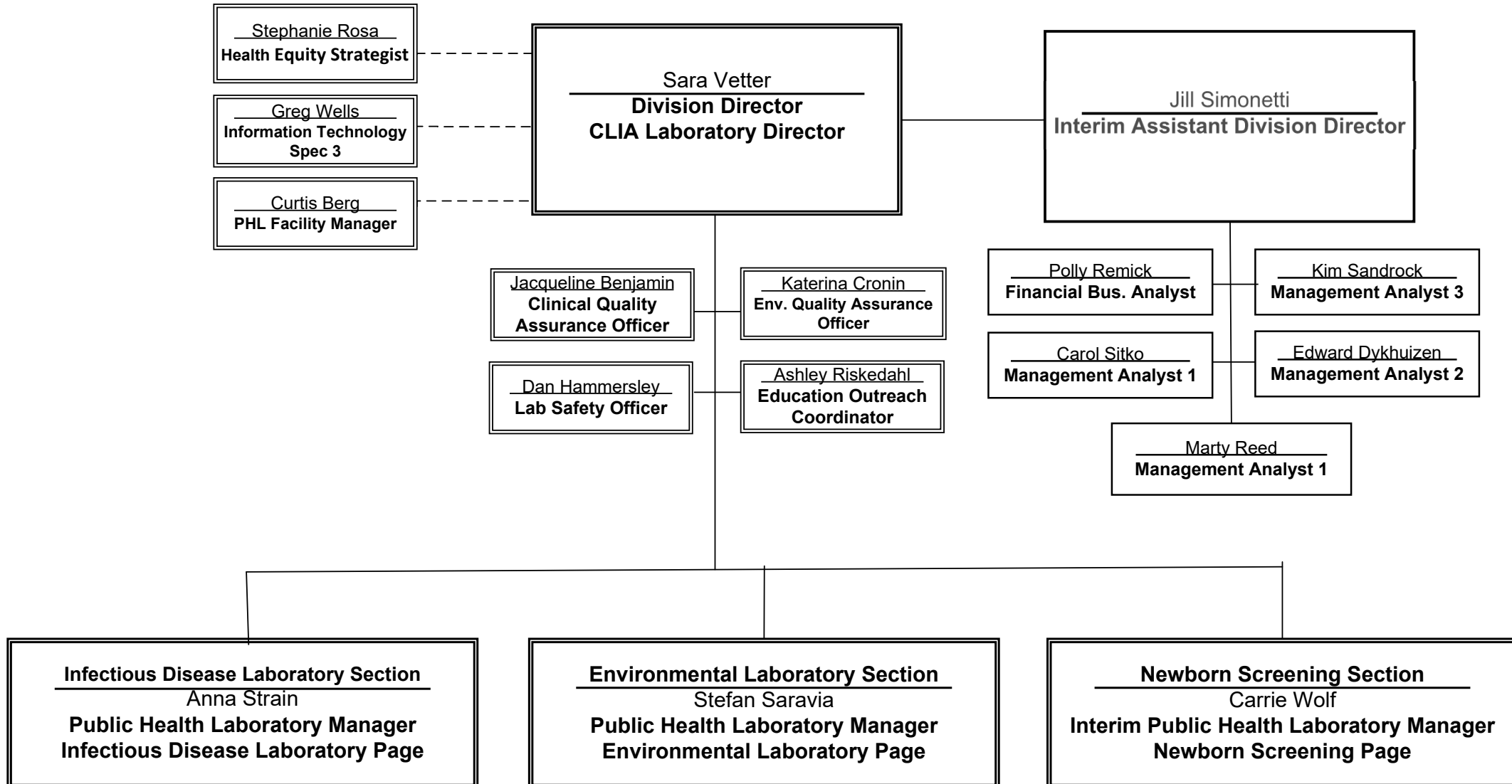
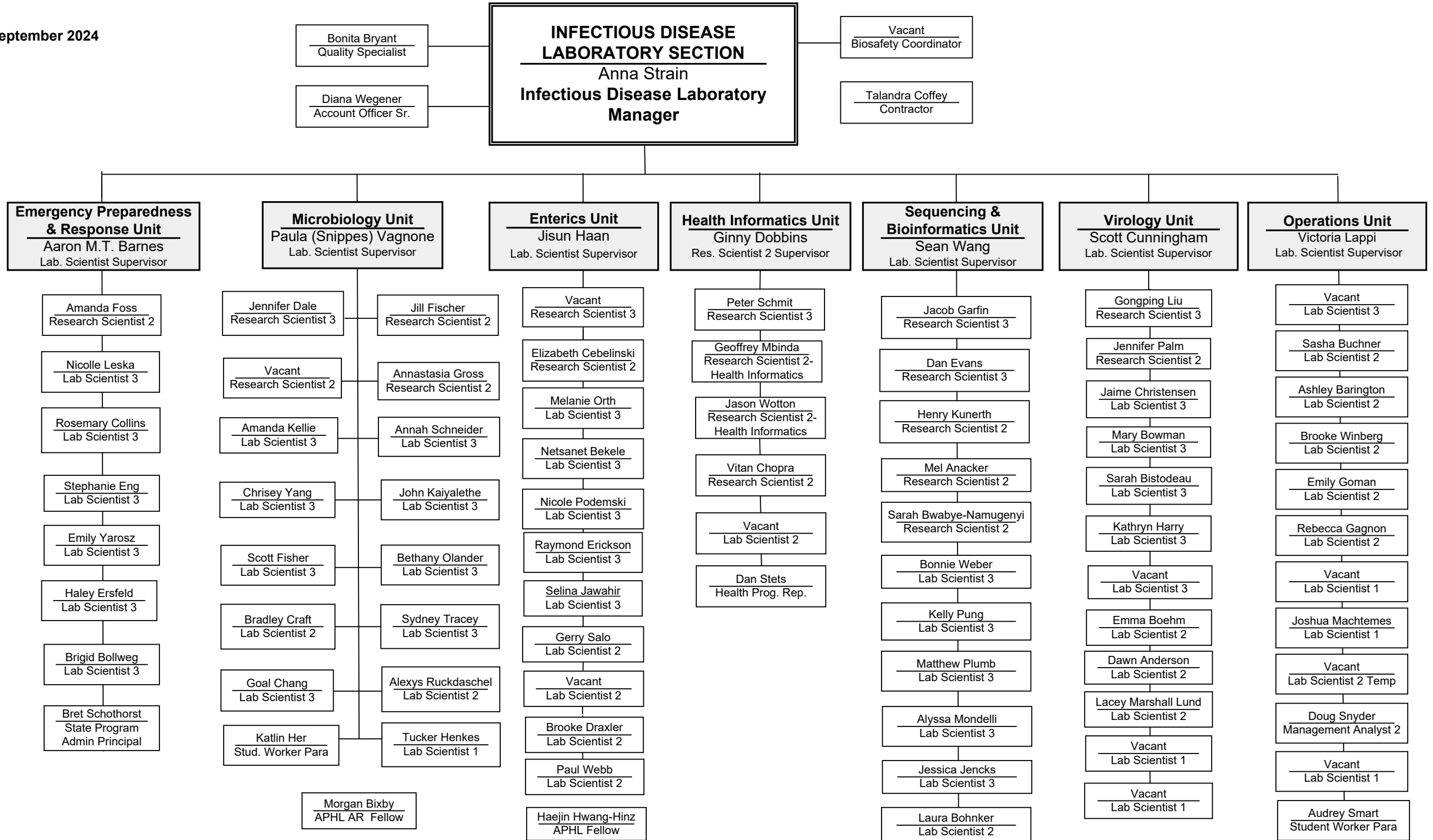


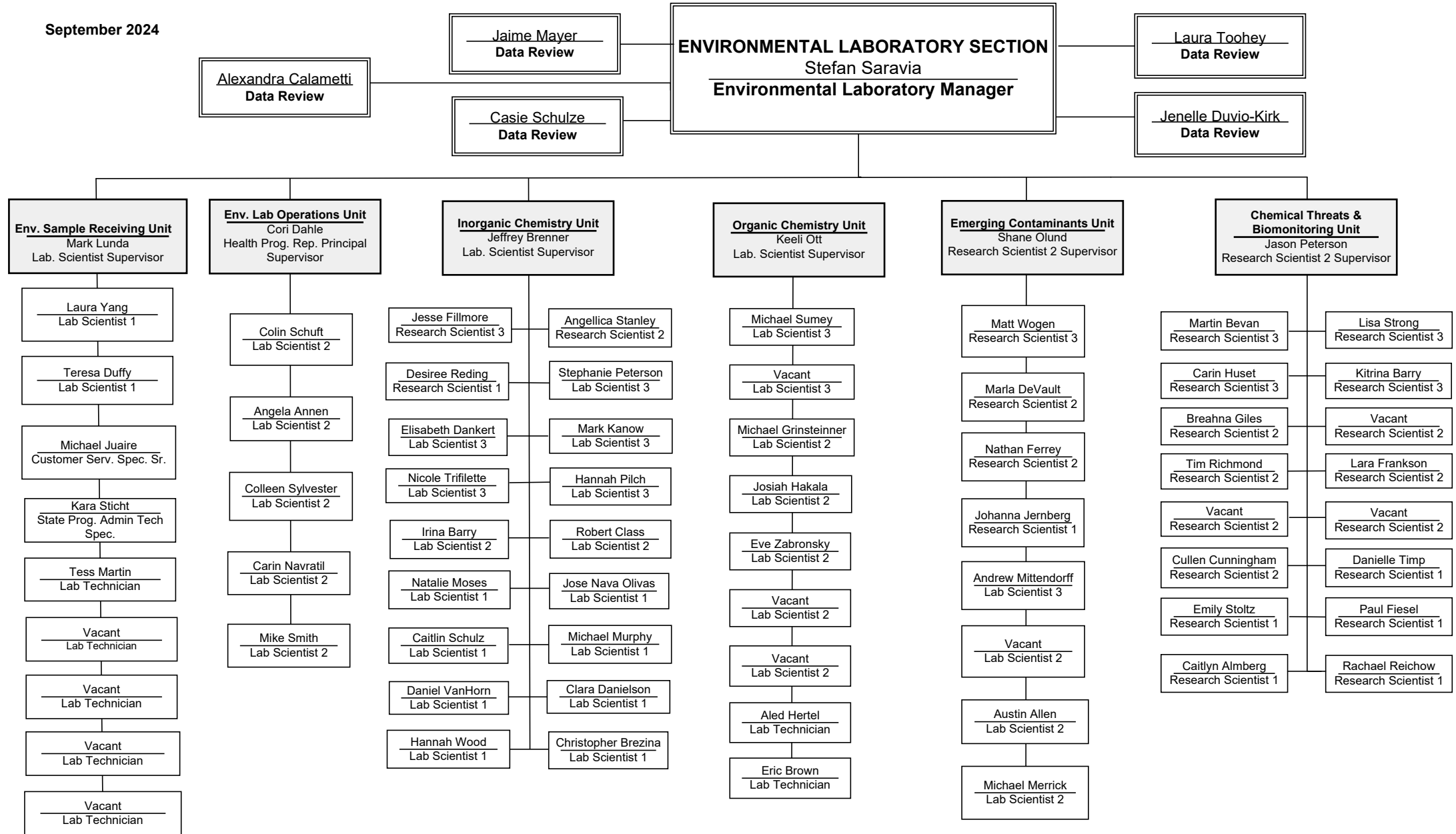
Minnesota Department of Health Public Health Laboratory Division

September 2024

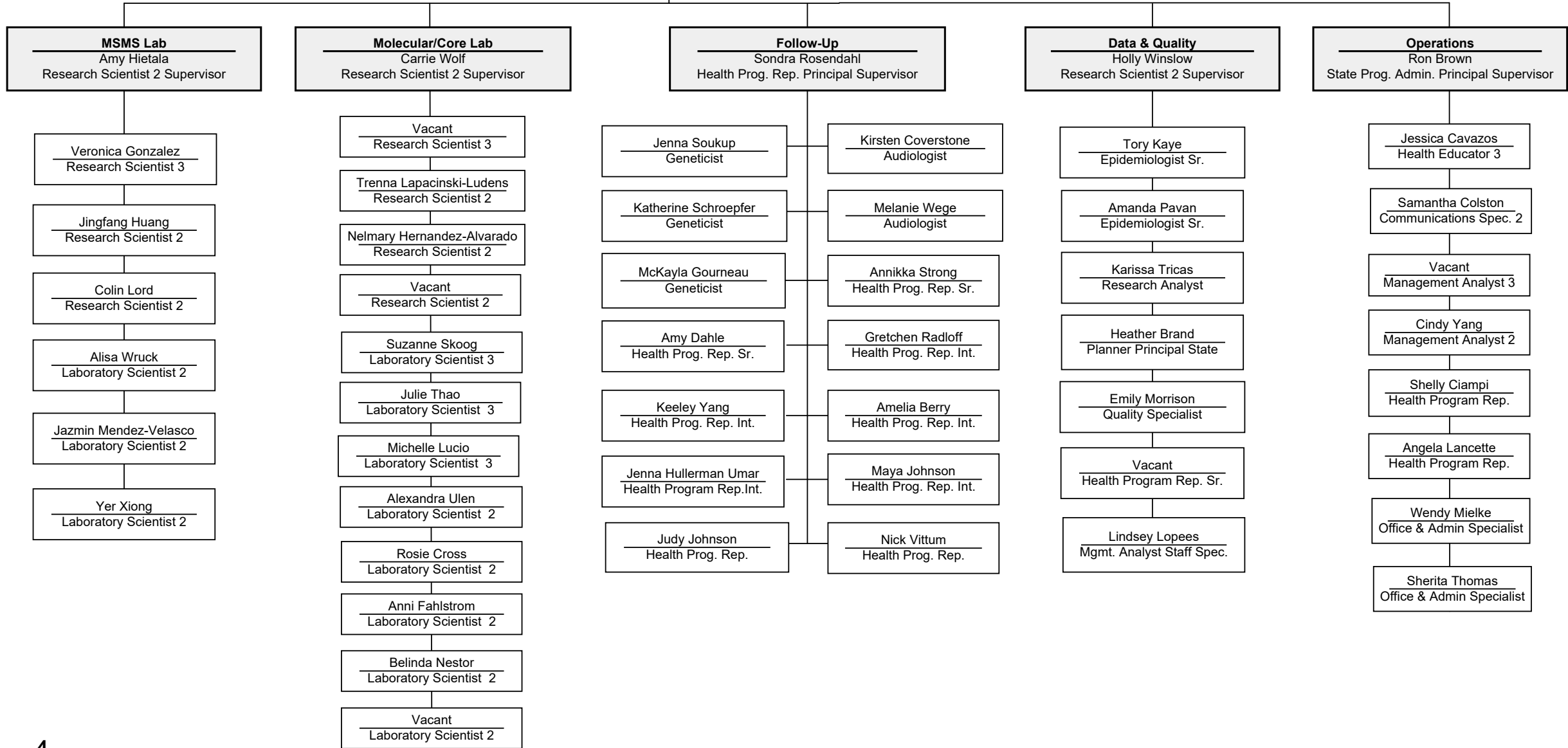




September 2024



NEWBORN SCREENING SECTION
 Carrie Wolf
 Interim Newborn Screening Manager



Public Health Laboratory Division Organizational Chart

This is the text version of the Division organizational chart for the Public Health Laboratory of the Minnesota Department of Health.

Director's Office:

Sara Vetter is the Division Director and CLIA Laboratory Director. The Section Managers, Carrie Wolf, Interim Newborn Screening Section Manager; Stefan Saravia, Environmental Laboratory Section; Anna Strain, Infectious Disease Laboratory Section; Dan Hammersley, Safety Officer; Katerina Cronin, Environmental Laboratory Quality Assurance Officer; Jaqueline Benjamin, Clinical Laboratory Quality Assurance Officer; Ashley Riskedahl, Education Outreach Coordinator; and Jill Simonetti, Interim Assistant Division Director; report to the Director. Stephanie Rosa, Health Equity Specialist, reports to the Office of Health Equity. Greg Wells, Information Technology Specialist 3; reports to MNIT. Curtis Berg, PHL Facility Manager, reports to MDH Facilities Management. Jill Simonetti is the Interim Assistant Division Director. Polly Remick, Financial Business Analyst; Kim Sandroek, Management Analyst 3; Edward Dykhuizen, Management Analyst 2; Carol Sitko, Management Analyst 1; and Marty Reed, Management Analyst 1; report directly to the Assistant Division Director.

Infectious Disease Laboratory Section:

Anna Strain is the Infectious Disease Laboratory Section Manager: Bonita Bryant; Program Administrator Principal; Dianna Wegener, Account Officer Senior; Vacant, Biosafety Coordinator; and Talandra Coffey, Contractor; report directly to the Infectious Disease Laboratory Manager. The seven Unit Supervisors listed below; also report directly to the Infectious Disease Manager:

- Scott Cunningham, Lab. Scientist Supervisor, Immunology and Virology Unit: Gongping Liu, Research Scientist 3; Jennifer Palm, Research Scientist 2; Sarah Bistodeau, Lab. Scientist 3; Jamie Christensen, Lab. Scientist 3; Kathryn Harry, Lab. Scientist 3; Mary Bowman, Lab. Scientist 3; Dawn Anderson, Lab. Scientist 2, Lacey Marshall Lund, Lab. Scientist 2; Emma Boehm, Lab. Scientist 2; and Vacant, Lab. Scientist 1.
- Victoria Lappi, Lab. Scientist Supervisor, Infectious Disease Operations Unit: Doug Snyder, Management Analyst 2; Vacant, Lab. Scientist 3; Brooke Winberg, Lab. Scientist 2; Rebecca Gagnon, Lab. Scientist 2; Sasha Buchner, Lab. Scientist 2; Ashley Barington, Lab. Scientist 2; Emily Goman, Lab. Scientist 2; Vacant, Lab. Scientist 2 Temp.; Vacant, Lab. Scientist 1; Joshua Machtemes, Lab. Scientist 1; and Vacant; Lab. Scientist 1.
- Jisun Haan, Lab. Scientist Supervisor, Enterics Unit: Vacant, Research Scientist 3; Elizabeth Cebelinski, Research Scientist 2; Melanie Orth, Lab. Scientist 3; Netsanet Bekele, Lab. Scientist 3; Nicole Podemski, Lab. Scientist 3; Raymond Erickson, Lab. Scientist 3; Selina Jawahir, Lab. Scientist 3; Geri Salo, Lab. Scientist 2; Paul Webb, Lab. Scientist 2; Brooke Draxler, Lab. Scientist 2; Vacant, Lab. Scientist 2; and Haejin Hwang-Hinz, APHL Bioinformatics Fellow.
- Aaron M.T. Barnes, Lab. Scientist Supervisor, Emergency Preparedness and Response Unit: Brigid Bollweg, Lab. Scientist 3; Stephanie Eng, Lab. Scientist 3; Emily Yarosz, Lab. Scientist 3; Nicolle Leska, Lab. Scientist 3; Rosemary Collins, Lab. Scientist 3; Haley Ersfeld, Lab. Scientist 3; Amanda Foss, Lab. Scientist 2; and Bret Schothorst, State Program Administrator Principal.

- Ginny Dobbins, Research Scientist 2 Supervisor, Health Informatics Unit: Peter Schmit, Research Scientist 3; Geoffrey Mbinda, Research Scientist 2; Jason Wotton, Research Scientist 2-Health Informatics; Vitan Chopra, Research Scientist 2; Vacant, Lab. Scientist 2; and Dan Stets; Health Program Rep.
- Paula Snippes Vagnone, Lab. Scientist Supervisor, Microbiology Unit: Jennifer Dale, Research Scientist 3; Anastasia Gross, Research Scientist 2; Vacant, Research Scientist 2; Jill; Fischer, Research Scientist 2; Annah Schneider, Lab. Scientist 3; Chrissy Yang, Lab. Scientist 3; Scott Fisher, Lab. Scientist 3; John Kaiyalethe, Lab. Scientist 3; Bonnie Weber, Lab. Scientist 3; Bethany Olander, Lab. Scientist 3; Amanda Kellie, Lab. Scientist 3; Sydney Tracey, Lab. Scientist 3; Goal Chang, Lab. Scientist 3, Alexys Ruckdaschel, Lab. Scientist 2; Bradley Craft, Lab. Scientist 2; Tucker Henkes, Lab. Scientist 1; Katlin Her, Student Worker Para; and Morgan Bixby, APHL AR Fellow.
- Sean Wang, Lab. Scientist Supervisor, Sequencing and BioInformatics Unit: Dan Evans, Research Scientist 3; Jacob Garfin, Research Scientist 3; Henry Kunerth, Research Scientist 2; Mel Anacker, Research Scientist 2; Sarah Bwabye Namugenyi, Research Scientist 2; Matthew Plumb, Lab. Scientist 3; Kelly Pung, Lab. Scientist 3; Alyssa Mondelli, Lab. Scientist 3; Jessica Jencks, Lab. Scientist 3; and Laura Bohnker, Lab. Scientist 2.

Environmental Laboratory Section:

Stefan Saravia is the Environmental Laboratory Section Manager: Laura Toohey, Data Review; Jenelle Duvio-Kirk, Data Review; Jaime Mayer, Data Review; Casie Schulze, Data Review; and Alexandra Calametti, Data Review; report directly to the Environmental Laboratory Manager. The six Unit Supervisors listed below report directly to the Environmental Laboratory Manager:

- Keeli Ott, Lab, Scientist Supervisor, Organic Chemistry Unit: Michael Sumei, Lab. Scientist 3; Vacant, Lab. Scientist 3; Michael Grinsteiner, Lab. Scientist 2; Eve Zabronsky, Lab. Scientist 2; Vacant, Lab. Scientist 2; Josiah Hakala, Lab. Scientist 2; Vacant, Lab. Scientist 2; Aled Hertel, Lab. Technician; and Eric Brown, Lab. Technician.
- Cori Dahle, Health Program Rep. Principal Supervisor, Environmental Laboratory Operations Unit: Colin Schuft, Lab. Scientist 2; Angie Annen, Lab. Scientist 2; Carin Navratil, Lab. Scientist 2; Colleen Sylvester, Lab. Scientist 2; and Mike Smith, Lab. Scientist 2.
- Jeffrey Brenner, Lab. Scientist Supervisor, Inorganic Chemistry Unit: Jesse Fillmore, Research Scientist 3; Angellica Stanley, Research Scientist 2; Desiree Reding, Research Scientist 1; Elisabeth Dankert, Lab. Scientist 3; Nicole Triffilette, Lab. Scientist 3; Stephanie Peterson, Lab. Scientist 3; Mark Kanow, Lab. Scientist 3; Hannah Pilch, Lab. Scientist 3; Robert Class, Lab. Scientist 2; Irina Barry, Lab. Scientist 2; Natalie Moses, Lab. Scientist 1, Dan VanHorn, Lab. Scientist 1, Caitlin Schulz, Lab. Scientist 1; Jose Nava Olivas, Lab. Scientist 1, Michael Murphy, Lab. Scientist 1; Christopher Brezina, Lab. Scientist 1; Hannah Wood, Lab Scientist 1; and Clara Danielson, Lab. Scientist 1.
- Mark Lunda, Lab. Scientist Supervisor, Environmental Sample Receiving Unit: Laura Yang, Lab. Scientist 1; Teresa Duffy, Lab. Scientist 1; Michael Juaire, Customer Service Specialist Senior; Kara Sticht, State Program Admin Tech Specialist; Tess Martin, Lab. Technician; Vacant, St Lab. Technician; Vacant, Lab. Technician; Vacant, St Lab. Technician; and Vacant, Lab. Technician.
- Jason Peterson, Research Scientist 2 Supervisor, Chemical Threats and Biomonitoring Unit: Martin Bevan, Research Scientist 3; Carin Huset, Research Scientist 3; Lisa Strong, Research Scientist 3; Kitrina Barry, Research Scientist 3; Vacant, Research Scientist 2; Breahna Giles, Research Scientist 2; Tim Richmond, Research Scientist 2; Lara Frankson, Research Scientist 2, Vacant, Research Scientist 2; Vacant, Research Scientist 2; Emily Stoltz, Research Scientist 1; Caitlyn Almberg, Research Scientist 1; Rachel Reichow, Research Scientist 1; Danielle Timp, Research Scientist 1; and Paul Fiesel, Research Scientist 1.
- Shane Olund, Research Scientist Supervisor, Emerging Contaminants Unit: Matt Wogen, Research Scientist 3; Marla DeVault, Research Scientist 2; Nathan Ferrey, Research Scientist 2; Johanna Jernberg, Research Scientist 1, Andrew Mittendorff, Lab. Scientist 3; Vacant, Lab. Scientist 2; Austin Allen, Lab. Scientist 2; and Michael Merrick, Lab. Scientist 2.

Newborn Screening Program Section:

Carrie Wolf is the Interim Newborn Screening Program Section Manager. The five Unit Supervisors listed below report directly to the Newborn Screening Section Manager.

- Amy Hietala, Research Scientist 2 Supervisor, MSMS Laboratory Unit: Alisha Wruck, Research Scientist 2; Jingfang Huang, Research Scientist 2; Colin Lord, Research Scientist 2; Veronica Gonzalez, Lab. Scientist 3; Yer Xiong, Lab. Scientist 2; and Jazmin Mendez-Velasco, Lab. Scientist 2.
- Carrie Wolf, Research Scientist 2 Supervisor, Molecular and Core Laboratory Unit: Vacant, Research Scientist 3, Trena Lapacinski-Ludens, Research Scientist 2; Nelmary Hernandez-Alvarado, Research Scientist 2; Vacant, Research Scientist 2; Suzanne Skoog, Lab. Scientist 3; Julie Thao, Lab. Scientist 3; Michelle Lucio, Lab. Scientist 3; Alexandra Ulen, Lab. Scientist 2; Rosie Gross, Lab. Scientist 2; Anni Fahlstrom, Lab. Scientist 2; Belinda Nestor, Lab. Scientist 2; and Vacant, Lab. Scientist 2.
- Sondra Rosendahl, Health Program Rep. Principal, Supervisor, Newborn Screening Follow-Up Unit: Kirsten Coverstone, Audiologist; Melanie Wege, Audiologist; McKayla Gourneau, Geneticist, Katherine Schroepfer, Geneticist; Jenna Soukup, Geneticist; Amy Dahle, Health Program Rep Senior; Annika Strong, Health Program Rep. Senior; Jenna Hullerman Umar; Health Program Rep Intermediate; Amelia Berry, Health Program Rep. Intermediate; Keely Yang, Health Program Rep. Intermediate; Maya Johnson, Health Program Rep. Intermediate; and Gretchen Radloff, Health Program Rep. Intermediate; Judy Johnson, Health Program Rep.; and Nick Vittum, Health Program Rep.
- Holly Winslow, Research Scientist 2 Supervisor, Data & Quality Unit: Amanda Pavan, Epidemiologist Senior; Tory Kaye, Epidemiologist Senior; Karissa Tricas, Research Analyst; Heather Brand, Planner Principal State; Emily Morrison, Quality Specialist; Lindsey Lopees, Management Analyst Staff Specialist; and Vacant, Health Program Rep Sr.
- Ron Brown, State Program Admin. Principal, Supervisor, Newborn Screening Operations Unit: Jessica Cavazos, Health Educator 3; Samantha Colston, Communications Specialist 2; Vacant, Management Analyst 3.; Cindy Yang, Management Analyst 2; Angela Lancette, Health Program Rep.; Shelly Ciampi, Health Program Rep.; Sherita Thomas, Office Administrative Specialist; and Wendy Mielke, Office Administrative Specialist.