

Health Policy Division Staff and Organization List

SEPTEMBER 16, 2024

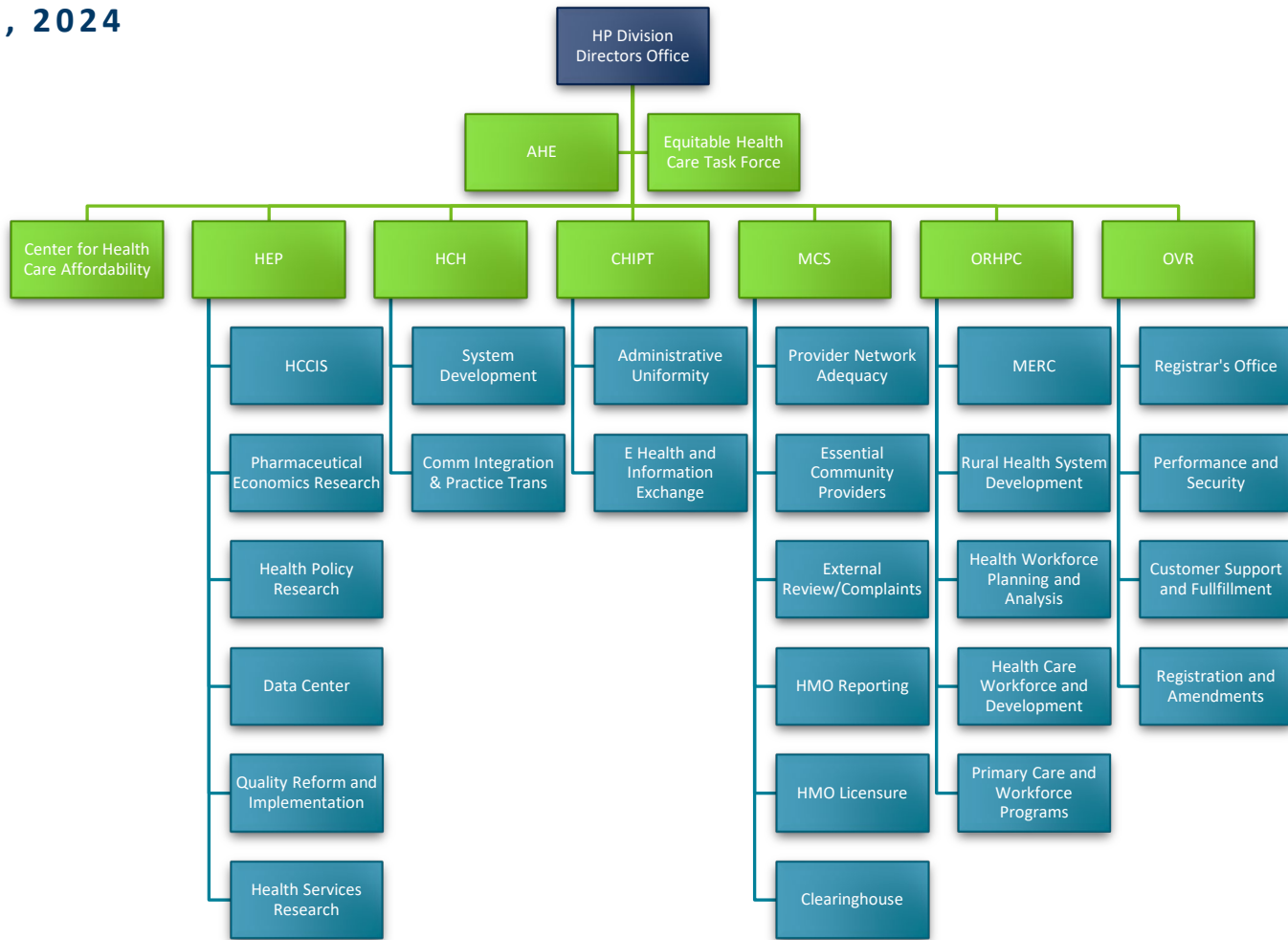


Table of Contents

Health Policy Division Staff and Organization List	1
Division Director’s Office	2
Adverse Events Reporting (AHE).....	2
Equitable Health Care Task Force	2
Center for Health Information Policy and Transformation (CHIPT)	2
Administrative Uniformity	2
E Health and Health Information Exchange.....	2
Center for Health Care Affordability.....	2
Health Care Homes (HCH).....	3
System Development	3
Community Integration and Practice Transformation.....	3
Health Economics Program (HEP).....	3
Minnesota Health Care Cost Information System (HCCIS)	3
Pharmaceutical Economics Research	3
Health Policy Research.....	4
Data Center	4
Quality Reform Implementation.....	4
Health Services Research	4
Managed Care Systems (MCS)	4
Clearinghouse	5
Office of Rural Health and Primary Care (ORHPC).....	5
MERC (Health Care Workforce and Education)	5
Rural Health System Development/Trauma.....	5
Health Workforce Planning and Analysis.....	6
Health Care Workforce and Development	6
Primary Care and Workforce Programs.....	6
Office of Vital Records (OVR)	7
Registrar’s Office.....	7
Performance and Security	7
Customer Support and Fulfillment	7
Registration and Fulfillment	8

Health Policy MN.IT Services 8

Division Director's Office

- **Division Director:** Diane Rydrych
- **Assistant Division Director:** Susan Castellano
 - **Health Policy Specialist:** Tara Borton
 - **Financial Management:** Barb Fischer
 - **Information and Communications Coordinator:** Morgan (Foster) Powers

Adverse Events Reporting (AHE)

- **Program Director:** Rachel Jokela

Equitable Health Care Task Force

- **Reports to:** Division Director's Office
 - Denise McCabe
 - Julia Stumpf

Center for Health Information Policy and Transformation (CHIPT)

- **Program Manager:** Jennifer Fritz
 - Susie Blake
 - Sarah Shaw

Administrative Uniformity

- **Supervisor:** Jennifer Fritz
 - Dave Haugen

E Health and Health Information Exchange

- **Supervisor:** Karen Soderberg
 - Bilqis Amatus-Salaam
 - Kari Guida
 - Anne Schloegel

Center for Health Care Affordability

- **Supervisor:** Vacant
 - Vacant

Health Care Homes (HCH)

- **Program Manager:** David Kurtzon

System Development

- **Supervisor:** Tina Peters
 - Georgia Anderson
 - Joan Kindt
 - Jennifer Strickland
 - Lisa Behr
 - Vacant

Community Integration and Practice Transformation

- **Supervisor:** Rosemarie Rodriguez-Hager
 - Sadie Anderson
 - Dorothy Hull
 - Catherine Johnson

Health Economics Program (HEP)

- **Program Director:** Stefan Gildemeister
- **Program Deputy Director:** Cara Bailey
 - Kristen Ackert
 - Diane Hammond
 - Kelsey Schaezner

Minnesota Health Care Cost Information System (HCCIS)

- **Supervisor:** Cara Bailey
 - Tracy Johnson

Pharmaceutical Economics Research

- **Supervisor:** Annelisa Steeber
 - Margaret Abraham-Kaz (Contractor)
 - Margaret Darling

- Sean MacDonell
- David Raatz
- Abby Vogel

Health Policy Research

- **Supervisor:** Vacant (Stefan Gildemeister and Cara Bailey)
 - Nathan Hierlmaier
 - Marco Morales
 - Kathleen Panas
 - Renee Saarela
 - Michelle Wilson
 - Rachel Wittkopp, *Student Worker*

Data Center

- **Supervisor:** Karl Fenstrom
 - Michael Adams
 - Beth Bowerman
 - Erinn Sanstead

Quality Reform Implementation

- **Supervisor:** Denise McCabe
 - Rachel Cahoon
 - Sarah Evans
 - David Hesse
 - Kelsey Kannenberg

Health Services Research

- **Director:** Pam Mink
 - Michael Burian
 - Beth Egan
 - Astrid Knott
 - Ben Nicla

Managed Care Systems (MCS)

- **Program Manager:** Julie Erickson

- **Assistant Program Manager:** Alisha Simon
 - William (Bill) Christjaener
 - Sara Dufour
 - Andrea Ecklund
 - Dena Harrell
 - Mekibib Hirpo
 - Eric Holland
 - Kirsten Peterson
 - Michelle Stein
 - Brenda Sorvig
 - Mary Timm

Clearinghouse

- Cheryl Jacobson

Office of Rural Health and Primary Care (ORHPC)

- **Program Manager:** Zora Radosevich
 - Yende Anderson

MERC (Health Care Workforce and Education)

- **Supervisor:** Zora Radosevich
 - Diane Reger

Rural Health System Development/Trauma

- **Deputy Director:** Tim Held
 - Emma Distel
 - Maria Flor
 - LynMarie Harris
 - Tamika Howard, *Contractor*
 - Tammy Peterson
 - Gina Vue
 - Grace Liu, *student worker*
 - Olivia Houck
 - Dee Telkamp

Health Workforce Planning and Analysis

- **Supervisor:** Nitika Moibi
 - Kelsey Besse
 - Teri Fritsma
 - Lillian Norman, *student worker*
 - Kevan O’Hanlon, *student worker*
 - Valerie Stofferahn
 - Megan Loew
 - Madison Weirick

Health Care Workforce and Development

- **Supervisor:** Ann Linde
 - Siham Abdellah
 - Roble Aden
 - Robin Bly
 - Zoe Hill
 - Melanie Innes
 - Erik Larson
 - Joanne Madrid
 - Renee Richie
 - Samantha Rowbottom

Primary Care and Workforce Programs

- **Supervisor:** Laura Sutter
 - Rebekah Ehlebracht
 - Elizabeth Fenske
 - Brenda Flattum
 - Katie Hentges
 - Janet Howard
 - Daniel Merkl
 - Therese Nett
 - Liza Root, *contractor*
 - Sarah Grafstrom

- Mai La Ong Vang
- Gao Nue Xiong

Office of Vital Records (OVR)

- **Program Manager:** Molly Crawford

Registrar's Office

Supervisor: Molly Crawford [#MDH_HP-OVR_Registrar's_Office](#)

- Mary L Connor
- Heidi Granlund
- Dylan Slivik
- Sarah Ryan
- Shonda Wright

Performance and Security - [#MDH_HP-OVR-Performance-Security-Unit](#)

- **Supervisor:** Anne Kleppe
 - Sally Almond
 - Nancy Bollman
 - Melanie Charpentier
 - Cheri Denardo
 - Justin Maine
 - Carl Haydel

Customer Support and Fulfillment [#MDH_HP-OVR-Help_Desk](#)

[#MDH_HP-OVR_Statewide_System_and_Application_Support](#)

- **Supervisor:** Bill Devine
 - Jose Andrade
 - Michael DeBough
 - Shelly Eichenlaub
 - Michael Fanslow
 - Jesse Govaert
 - Kathleen Hiera
 - James Kasal
 - Sharon Mitchell
 - John Mogren

HEALTH POLICY STAFF

- Seth Nesting
- Mary Roguski
- Gretchen Younger

Registration and Fulfillment [#MDH HP-OVR Registration and Fulfillment](#)

- **Supervisor:** Krista Bauer
 - Lead: Maria Schaff
 - James Andre
 - Jean Cocchiarella
 - Kimberly Dodge
 - Aura Mendoza Albuquerque
 - Jean Garman
 - Maureen Sheehy-Kustaa

Health Policy MN.IT Services

- **Supervisor:** Rohit Saxena
 - Trung Nguyen
 - Jason Tillman
 - Doug Wheeler
 - Tony Yang
 - Hung Nguyen
 - Yang Yang

Minnesota Department of Health
Health Policy Division
PO Box 64975
St. Paul, MN 55164-0975
www.health.state.mn.us

To obtain this information in a different format, call: 651-201-3560