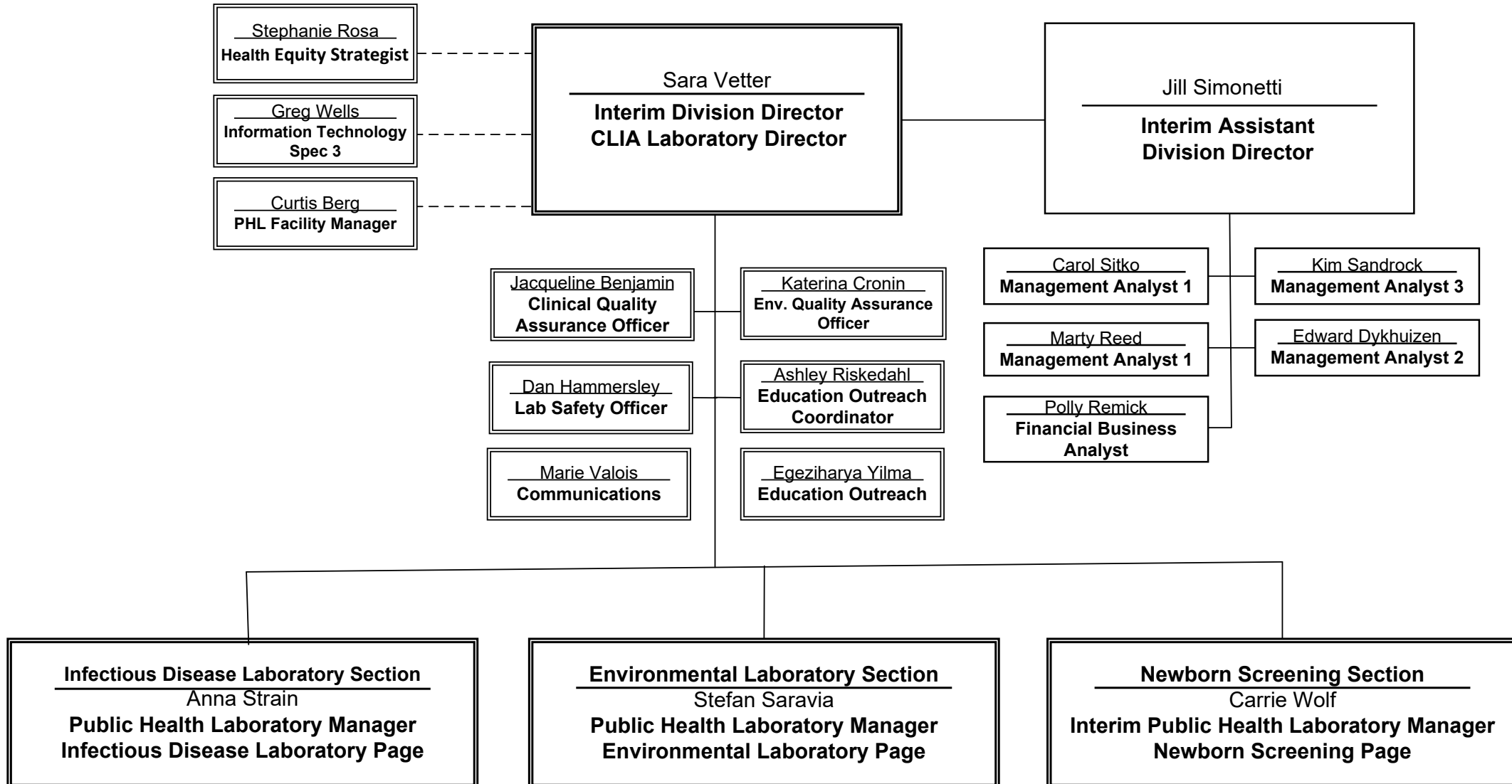
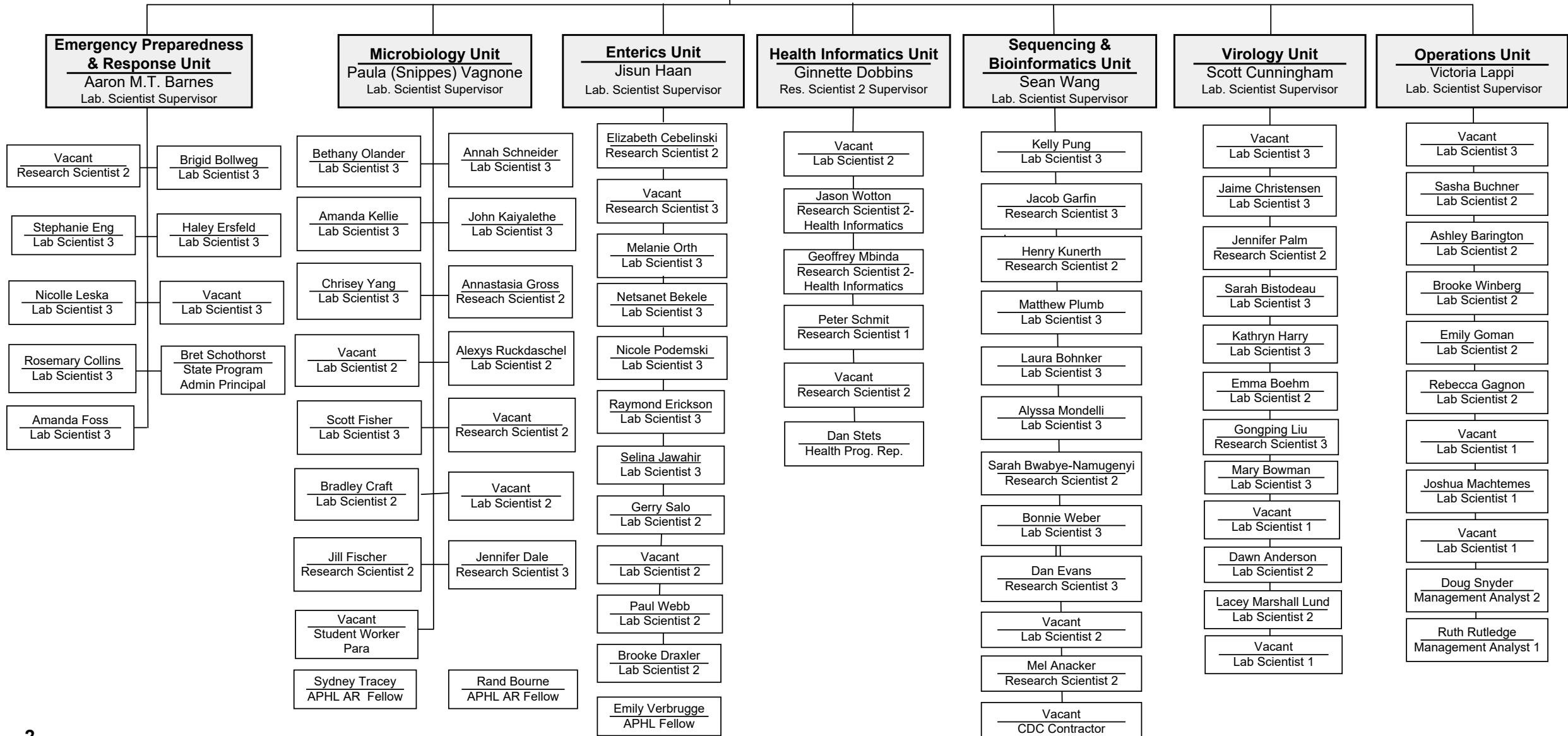
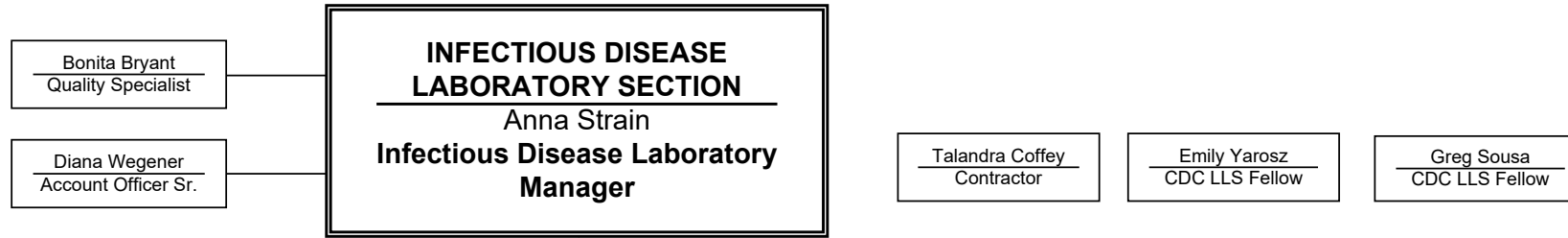


Minnesota Department of Health Public Health Laboratory Division

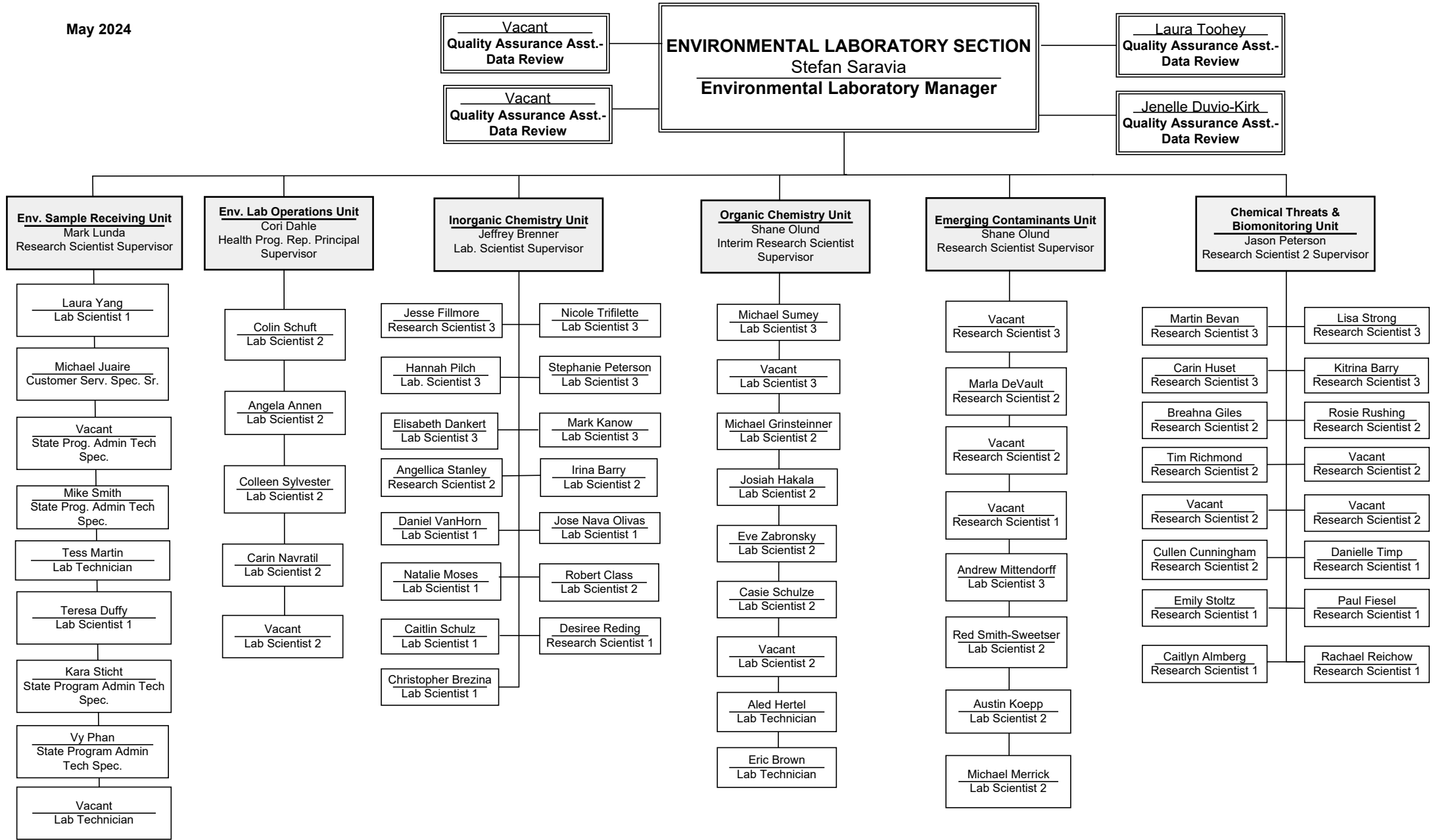
May 2024



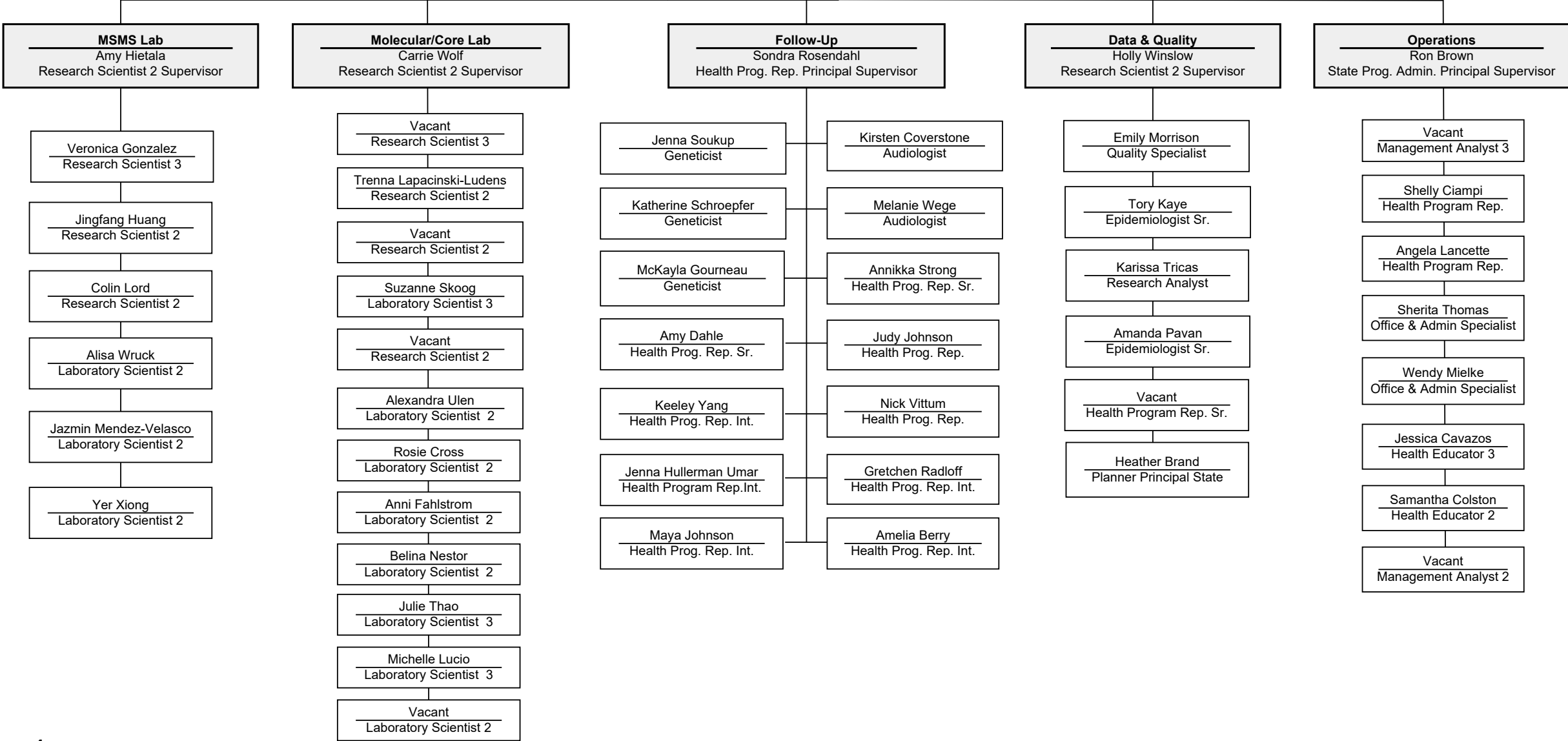
May 2024



May 2024



NEWBORN SCREENING SECTION
 Carrie Wolf
 Interim Newborn Screening Manager



Public Health Laboratory Division Organizational Chart

This is the text version of the Division organizational chart for the Public Health Laboratory of the Minnesota Department of Health.

Director's Office:

Sara Vetter is the Interim Division Director and CLIA Laboratory Director. The Section Managers, Carrie Wolf, Interim Newborn Screening Section Manager; Stefan Saravia, Environmental Laboratory Section; Anna Strain, Infectious Disease Laboratory Section; Dan Hammersley, Safety Officer; Katerina Cronin, Environmental Laboratory Quality Assurance Officer; Jaqueline Benjamin, Clinical Laboratory Quality Assurance Officer; Ashley Riskedahl, Education Outreach Coordinator; Egezharya Yilma, Education Outreach; Marie Valois, Communications; and Jill Simonetti, Interim Assistant Division Director; report to the Director. Stephanie Rosa, Health Equity Specialist, reports to the Office of Health Equity. Greg Wells, Information Technology Specialist 3; reports to MNIT. Curtis Berg, PHL Facility Manager, reports to MDH Facilities Management. Jill Simonetti is the Interim Assistant Division Director. Kim Sandrock, Management Analyst 3; Carol Sitko, Management Analyst 1; Marty Reed, Management Analyst 1; Edward Dykhuizen, Management Analyst 2; and Polly Remick, Financial Business Analyst; report directly to the Assistant Division Director.

Infectious Disease Laboratory Section:

Anna Strain is the Infectious Disease Laboratory Section Manager: Bonita Bryant; Program Administrator Principal; Dianna Wegener, Account Officer Senior; Emily Yarosz, CDC LLS Fellow; Greg Sousa, CDC LLS Fellow; and Talandra Coffey, Contractor; report directly to the Infectious Disease Laboratory Manager. The seven Unit Supervisors listed below; also report directly to the Infectious Disease Manager:

- Scott Cunningham, Laboratory Scientist Supervisor: Immunology and Virology Unit: Jamie Christensen, Lab. Scientist 3; Jennifer Palm, Research Scientist 2; Sarah Bistodeau, Lab. Scientist 3; Kathryn Harry, Lab. Scientist 3; Gongping Liu, Research Scientist 3; Mary Bowman, Lab. Scientist 3; Vacant, Lab. Scientist 1; Dawn Anderson, Lab. Scientist 2, Lacey Marshall Lund, Lab. Scientist 2; and Emma Boehm, Lab. Scientist 2.
- Victoria Lappi, Laboratory Scientist Supervisor: Infectious Disease Operations Unit; Ruth Rutledge; Management Analyst 1; Doug Snyder, Management Analyst 2; Vacant, Lab. Scientist 3; Vacant, Lab. Scientist 1; Brooke Winberg, Lab. Scientist 2; Rebecca Gagnon, Lab. Scientist 2; Sasha Buchner, Lab. Scientist 2; Ashley Barington, Lab. Scientist 2; Emily Goman, Lab. Scientist 2; Joshua Machtemes, Lab. Scientist 1; Vacant, Lab. Scientist 1
- Jisun Haan, Laboratory Scientist Supervisor: Enterics Unit: Elizabeth Cebelinski, Research Scientist 2; Vacant, Research Scientist 3; Melanie Orth, Lab. Scientist 3; Netsanet Bekele, Lab. Scientist 3; Nicole Podemski, Lab. Scientist 3; Raymond Erickson, Lab. Scientist 3; Selina Jawahir, Lab. Scientist 3; Geri Salo, Lab. Scientist 2; Paul Webb, Lab. Scientist 2; Brooke Draxler, Lab. Scientist 2; Vacant, Lab. Scientist 2; and Emily Verbrugge, APHL Fellow.
- Aaron M.T. Barnes, Laboratory Scientist Supervisor: Emergency Preparedness and Response Unit: Vacant, Research Scientist 2; Brigid Bollweg, Lab. Scientist 3; Stephanie Eng, Lab. Scientist 3; Vacant, Lab. Scientist 3; Nicolle Leska, Lab. Scientist 3; Rosemary Collins, Lab. Scientist 3; Amanda Foss, Lab. Scientist 3; Bret Schothorst, State Program Administrator Principal; and Haley Ersfeld, Lab. Scientist 3.

- Ginette Dobbins, Research Scientist 2 Supervisor, Health Informatics Unit: Vacant, Lab. Scientist 2; Peter Schmit, Research Scientist 1; Geoffrey Mbinda, Research Scientist 2; Jason Wotton, Research Scientist 2-Health Informatics; Dan Stets; Health Program Rep; and Vacant, Research Scientist 2.
- Paula Snippes Vagnone, Laboratory Scientist Supervisor, Microbiology Unit: Anastasia Gross, Research Scientist 2; Chrissy Yang, Lab. Scientist 3; Scott Fisher, Lab. Scientist 3; John Kaiyalethe, Lab. Scientist 3; Bethany Olander, Lab. Scientist 3; Kerry MacInnes, Lab. Scientist 2, Alexys Ruckdaschel, Lab. Scientist 2; Bradley Craft, Lab. Scientist 2; Vacant, Lab. Scientist 2; Annah Schneider, Lab. Scientist 3; Jennifer Dale, Research Scientist 3; Vacant, Research Scientist 2; Jill; Fischer, Research Scientist 2; Amanda Kellie, Lab. Scientist 3: Vacant, Student Worker Para; Rand Bourne, APHL AR Fellow; and Sydney Tracey, APHL AR Fellow.
- Sean Wang, Laboratory Scientist Supervisor, Sequencing and Bioinformatics Unit: Kelly Pung, Lab. Scientist 3; Jacob Garfin, Research Scientist 3; Henry Kunerth, Research Scientist 2; Matthew Plumb, Lab. Scientist 3; Laura Bohnker, Lab. Scientist 3; Alyssa Mondelli, Lab. Scientist 3; Sarah Bwabye Namugenyi, Research Scientist 2; Bonnie Weber, Lab. Scientist 3; Dan Evans, Research Scientist 3; Mel Anacker, Research Scientist 2; Vacant, Lab. Scientist 2; and Vacant, CDC Contractor.

Environmental Laboratory Section:

Stefan Saravia is the Environmental Laboratory Section Manager: Laura Toohey, Quality Assurance Assistant Data Review; Jenelle Duvio-Kirk, Quality Assurance Assistant Data Review; Vacant, Quality Assurance Assistant Data Review; and Vacant, Quality Assurance Assistant Data Review; reports directly to the Environmental Laboratory Manager. The six Unit Supervisors listed below report directly to the Environmental Laboratory Manager:

- Shane Olund, Interim Laboratory Scientist, Organic Chemistry Unit: Michael Sumei, Lab. Scientist 3; Vacant, Lab. Scientist 3; Michael Grinsteiner, Lab. Scientist 2; Eve Zabronsky, Lab. Scientist 2; Casie Schulze, Lab. Scientist 2; Josiah Hakala, Lab. Scientist 2; Mark Kanow, Lab. Scientist 3; Vacant, Lab. Scientist 2; Aled Hertel, Lab. Technician; and Eric Brown, Lab. Technician.
- Cori Dahle, Health Program Rep. Principal Supervisor: Environmental Laboratory Operations Unit: Colin Schuft, Lab. Scientist 2; Angie Annen, Lab. Scientist 2; Carin Navratil, Lab. Scientist 2; Colleen Sylvester, Lab. Scientist 2; and Vacant, Lab. Scientist 2.
- Jeffrey Brenner, Laboratory Scientist Supervisor: Inorganic Chemistry Unit: Robert Class, Lab. Scientist 2; Jesse Fillmore, Research Scientist 3; Elisabeth Dankert, Lab. Scientist 3; Irina Barry, Lab. Scientist 2; Nicole Triffilette, Lab. Scientist 3; Stephanie Peterson, Lab. Scientist 3; Hannah Pilch, Lab. Scientist 3; Natalie Moses, Lab. Scientist 1, Dan VanHorn, Lab. Scientist 1, Caitlin Schulz, Lab. Scientist 1; Jose Nava Olivas, Lab. Scientist 1, Angellica Stanley, Research Scientist 2; Mark Kanow, Lab. Scientist 2; Vacant, Student Worker; Desiree Reding, Research Scientist 1; and Christopher Brezina, Lab. Scientist 1.
- Mark Lunda, Laboratory Scientist Supervisor: Environmental Sample Receiving Unit: Laura Yang, Lab. Scientist 1; Michael Juare, Customer Service Specialist Senior; Kara Sticht, State Program Admin Tech Specialist; Mike Smith, State Program Admin Tech Specialist; Vy Phan, State Program Admin Tech Specialist; Teresa Duffy, Lab. Scientist 1; Tess Martin, Lab. Technician; Vacant, Lab. Scientist 2; and Vacant, Lab. Technician
- Jason Peterson, Research Scientist 2 Supervisor: Chemical Threats and Biomonitoring Unit: Martin Bevan, Research Scientist 3; Carin Huset, Research Scientist 3; Tim Richmond, Research Scientist 2; Lisa Strong, Research Scientist 3; Rosie Rushing, Research Scientist 2; Kitrina Barry, Research Scientist 3; Breahna Giles, Research Scientist 2; Vacant, Research Scientist 2, Danielle Timp, Research Scientist 1; Cullen Cunningham, Research Scientist 2; Paul Fiesel, Research Scientist 1; Vacant, Research Scientist 2; Vacant, Research Scientist 2; Emily Stoltz, Research Scientist 1; Caitlyn Almberg, Research Scientist 1 and Rachel Reichow, Research Scientist 1.
- Shane Olund, Research Scientist Supervisor: Emerging Contaminants Unit: Vacant, Research Scientist 3; Marla DeVault, Research Scientist 2; Vacant, Research Scientist 2; Vacant, Research Scientist 1; Red Smith-Sweetser, Lab. Scientist 2; Andrew Mittendorff, Lab. Scientist 3; Austin Koepp, Lab. Scientist 2; and Michael Merrick, Lab. Scientist 2.

Newborn Screening Program Section:

Carrie Wolf is the Interim Newborn Screening Program Section Manager. The five Unit Supervisors listed below report directly to the Newborn Screening Section Manager.

- Amy Hietala, Research Scientist 2 Supervisor: MSMS Laboratory Unit: Alisha Wruck, Research Scientist 2; Jingfang Huang, Research Scientist 2; Colin Lord, Research Scientist 2; Veronica Gonzalez, Lab. Scientist 3; Yer Xiong, Lab. Scientist 2; and Jazmin Mendez-Velasco, Lab. Scientist 2.
- Carrie Wolf, Research Scientist 2 Supervisor: Molecular and Core Laboratory Unit: Vacant, Research Scientist 3, Trena Lapacinski-Ludens, Research Scientist 2; Vacant, Research Scientist 2; Suzanne Skoog, Lab. Scientist 3; Vacant, Research Scientist 2; Alexandra Ulen, Lab. Scientist 2; Rosie Gross, Lab. Scientist 2; Anni Fahlstrom, Lab. Scientist 2; Julie Thao, Lab. Scientist 3, Belinda Nestor, Lab. Scientist 2; Michelle Lucio, Lab. Scientist 3; and Vacant, Lab. Scientist 2.
- Sondra Rosendahl, Health Program Rep. Principal Supervisor: Newborn Screening Follow-Up Unit: McKayla Gourneau, Geneticist, Katherine Schroepfer, Geneticist; Jenna Soukup, Geneticist; Amy Dahle, Health Program Rep Senior; Jenna Hullerman Umar; Health Program Rep Intermediate; Kirsten Coverstone, Audiologist; Melanie Wege, Audiologist; Annika Strong, Health Program Rep. Sr.; Amelia Berry, Health Program Rep. Intermediate; Judy Johnson, Health Program Rep.; Keely Yang, Health Program Rep. Intermediate; Nick Vittum, Health Program Rep; Maya Johnson, Health Program Rep. Intermediate; and Gretchen Radloff, Health Program Rep. Int.
- Holly Winslow, Research Scientist 2 Supervisor: Data & Quality Unit: Emily Morrison, Quality Specialist; Amanda Pavan, Epidemiologist Senior; Tory Kaye, Epidemiologist Senior; Karissa Tricas, Research Analyst; Heather Brand, Planner Principal State; and Vacant, Health Program Rep Sr.
- Ron Brown, State Program Admin. Principal Supervisor: Newborn Screening Operations Unit: Angela Lancette, Health Program Rep; Vacant, Management Analyst 2; Shelly Ciampi, Health Program Rep; Vacant, Health Program Rep; Sherita Thomas, Office Administrative Specialist; Wendy Mielke, Office Administrative Specialist; Jessica Cavazos, Health Educator 3; Samantha Colston, Health Educator 2; and Vacant, Management Analyst 3.